

POLYSIUS OFFICE AND WAREHOUSE

PROJECT DETAILS

Client: A B Tilbury

Electrical: BEST Consultants

Construction: 2009

Value: \$5M

PROJECT REQUIREMENTS

2.0MVA Site Capacity

PROJECT FEATURES

16A – 125A 3 phase GPO's

Dual function emergency lighting

Intelligent lighting control

Cat 6 data cabling

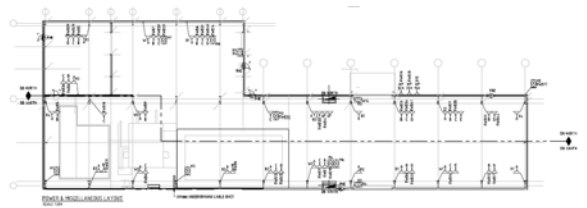
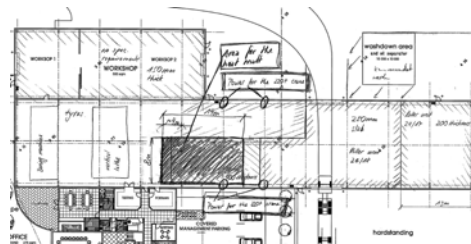


BEST Consultants were commissioned to undertake the design and documentation of the electrical services requirements to the new Polysius Office and Warehouse project as part of the Design and Construct team headed by the Northerly Group.

Working closely with the specialist electrical services contractor, A.B Tilbury we were able to facilitate the clients brief into a detailed design that was delivered on time and on budget.

The electrical design was prepared to enable a high level of system flexibility, ensuring future client changes can be accommodated with the minimum amount of disruption.

The project was successfully completed during early 2009.



575 Newcastle Street, West Perth WA 6005

PO Box 148, Leederville WA 6903

T +61 8 9227 0300 F +61 9227 0400

E info@bestconsultants.com.au

www.bestconsultants.com.au

